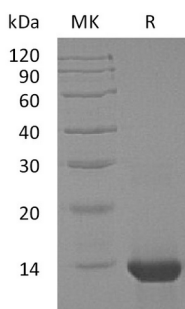


概述 (Summary)

英文全称	IL-4/Interleukin-4
纯度 (Purity)	Greater than 95% as determined by reducing SDS-PAGE
内毒素 (Endotoxin level)	<0.01 EU/μg as determined by LAL test.
蛋白构建 (Construction)	Recombinant Human Interleukin-4 is produced by our E.coli expression system and the target gene encoding His25-Ser153 is expressed.
Accession #	P05112
蛋白标签 (Tag)	
表达宿主 (Host)	E.coli
种属 (Species)	Human
预测分子量 (Predicted MW)	15.1 KDa
蛋白形态 (Form)	Lyophilized from a 0.2 μm filtered solution of 20mM Tris-HCl, 150mM NaCl, pH 7.2.
储存缓冲液 (Buffer)	
运输方式 (Shipping)	The product is shipped at ambient temperature. Upon receipt, store it immediately at the temperature listed below.
稳定性&储存 (Stability &Storage)	Lyophilized protein should be stored at ≤ -20°C, stable for one year after receipt. Reconstituted protein solution can be stored at 2-8°C for 2-7 days. Aliquots of reconstituted samples are stable at ≤ -20°C for 3 months.
复溶 (Reconstitution)	Always centrifuge tubes before opening. Do not mix by vortex or pipetting. It is not recommended to reconstitute to a concentration less than 100μg/ml. Dissolve the lyophilized protein in distilled water. Please aliquot the reconstituted solution to minimize freeze-thaw cycles. Always centrifuge tubes before opening. Do not mix by vortex or pipetting. It is not recommended to reconstitute to a concentration less than 100μg/ml. Dissolve the lyophilized protein in distilled water. Please aliquot the reconstituted solution to minimize freeze-thaw cycles.

电泳图 (SDS-PAGE image)

Product Name: Recombinant Human IL-4 (E. coli)
Catalog #: PEH0928



背景 (Background)

分子别名 (Alternative Names)

Interleukin-4; IL-4; B-Cell Stimulatory Factor 1; BSF-1; Binetrakin; Lymphocyte Stimulatory Factor 1; Pitrakinra; IL4

背景介绍 (References)

Interleukin-4 (IL-4) is a pleiotropic cytokine that regulates diverse T and B cell responses including cell proliferation, survival and gene expression. IL-4 is produced by mast cells, T cells, and bone marrow stromal cells. IL-4 regulates the differentiation of naive CD4⁺ T cells into helper Th2 cells, characterized by their cytokine-secretion profile that includes secretion of IL-4, IL-5, IL-6, IL-10, and IL-13, which favor a humoral immune response. Another dominant function of IL-4 is the regulation of immunoglobulin class switching to the IgG1 and IgE isotypes. Excessive IL-4 production by Th2 cells has been associated with elevated IgE production and allergic response.

注意事项 (Note)

For Research Use Only , Not for Diagnostic Use.