

产品名称: Recombinant Human OM (N-6His)
产品货号: PEH1267

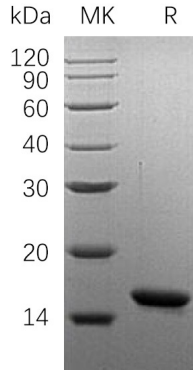


概述 (Summary)

英文全称	Parvalbumin β /OM/OCM
纯度 (Purity)	Greater than 95% as determined by reducing SDS-PAGE
内毒素 (Endotoxin level)	<1 EU/ μ g as determined by LAL test.
蛋白构建 (Construction)	Recombinant Human Oncomodulin-1 is produced by our E.coli expression system and the target gene encoding Met1-Ser109 is expressed with a 6His tag at the N-terminus.
Accession #	POCE72
表达宿主 (Host)	E.coli
种属 (Species)	Human
预测分子量 (Predicted MW)	14.3 KDa
制剂 (Form)	Lyophilized from a 0.2 μ m filtered solution of 50mM Tris-HCl, 100mM NaCl, pH 8.0.
运输方式 (Shipping)	The product is shipped at ambient temperature. Upon receipt, store it immediately at the temperature listed below.
稳定性&储存 (Stability &Storage)	Lyophilized protein should be stored at $\leq -20^{\circ}\text{C}$, stable for one year after receipt. Reconstituted protein solution can be stored at 2-8 $^{\circ}\text{C}$ for 2-7 days. Aliquots of reconstituted samples are stable at $\leq -20^{\circ}\text{C}$ for 3 months.
复溶 (Reconstitution)	Always centrifuge tubes before opening. Do not mix by vortex or pipetting. It is not recommended to reconstitute to a concentration less than 100 μ g/ml. Dissolve the lyophilized protein in distilled water. Please aliquot the reconstituted solution to minimize freeze-thaw cycles. Always centrifuge tubes before opening. Do not mix by vortex or pipetting. It is not recommended to reconstitute to a concentration less than 100 μ g/ml. Dissolve the lyophilized protein in distilled water. Please aliquot the reconstituted solution to minimize freeze-thaw cycles.

电泳图 (SDS-PAGE image)

产品名称: Recombinant Human OM (N-6His)
产品货号: PEH1267



背景 (Background)

分子别名 (Alternative Names)

Oncomodulin-1; OM; Parvalbumin Beta; OCM; OCM1; OCMN

背景介绍 (References)

Oncomodulin-1 (OM) is a small, calcium-binding protein and a macrophage-derived growth factor, which can promote axon regeneration in retinal ganglion cells. Oncomodulin-1 is constitutively secreted by activated macrophages in the vitreous and retina in response to inflammatory conditions that promote optic nerve regeneration. Oncomodulin-1 binds RGCs with high affinity in vitro, but only when cAMP is pharmacologically elevated or if the membrane is permeabilized allowing Oncomodulin-1 access to the cytosolic compartment. Oncomodulin-1 is a member of the superfamily of calmodulin proteins and is a high-affinity calcium ion-binding protein and contains 2 EF-hand domains. OM is found in early embryonic cells in the placenta and also in tumors. It has some calmodulin-like activity with respect to enzyme activation and growth regulation.

注意事项 (Note)

For research use only .