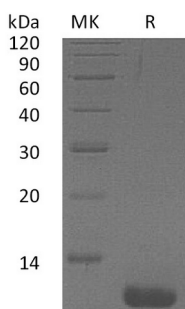


概述 (Summary)

英文全称	CCL1/C-C Motif Chemokine 1
纯度 (Purity)	Greater than 95% as determined by reducing SDS-PAGE
内毒素 (Endotoxin level)	<1 EU/μg as determined by LAL test.
蛋白构建 (Construction)	Recombinant Human C-C Motif Chemokine 1 is produced by our E.coli expression system and the target gene encoding Lys24-Lys96 is expressed.
Accession #	P22362
蛋白标签 (Tag)	
表达宿主 (Host)	E.coli
种属 (Species)	Human
预测分子量 (Predicted MW)	8.62 KDa
蛋白形态 (Form)	Lyophilized from a 0.2 μm filtered solution of PBS, pH 7.4.
储存缓冲液 (Buffer)	
运输方式 (Shipping)	The product is shipped at ambient temperature. Upon receipt, store it immediately at the temperature listed below.
稳定性&储存 (Stability &Storage)	Lyophilized protein should be stored at ≤ -20°C, stable for one year after receipt. Reconstituted protein solution can be stored at 2-8°C for 2-7 days. Aliquots of reconstituted samples are stable at ≤ -20°C for 3 months.
复溶 (Reconstitution)	Always centrifuge tubes before opening. Do not mix by vortex or pipetting. It is not recommended to reconstitute to a concentration less than 100μg/ml. Dissolve the lyophilized protein in distilled water. Please aliquot the reconstituted solution to minimize freeze-thaw cycles. Always centrifuge tubes before opening. Do not mix by vortex or pipetting. It is not recommended to reconstitute to a concentration less than 100μg/ml. Dissolve the lyophilized protein in distilled water. Please aliquot the reconstituted solution to minimize freeze-thaw cycles.

电泳图 (SDS-PAGE image)

Product Name: Recombinant Human CCL1
Catalog #: PEH2085



背景 (Background)

分子别名 (Alternative Names)

C-C Motif Chemokine 1; Small-Inducible Cytokine A1; T Lymphocyte-Secreted Protein I-309; CCL1; SCYA1

背景介绍 (References)

Chemokine (C-C Motif) Ligand 1 (CCL1) is a small glycoprotein secreted by activated T cells, which play a central role during immunoregulatory and inflammation processes. Human CCL1 has been assumed to be a homologue of the mouse TCA3. While the two proteins share only approximately 42% amino acid sequence identity, both chemokines contain an extra pair of cysteine residues not found in most other chemokines. CCL1 attracts monocytes, NK cells, and immature B cells and dendritic cells by interacting with cell surface chemokine receptor CCR8. CCL1 is identified as a potent inhibitor of HIV-1 envelope-mediated cell-cell fusion and virus infection.

注意事项 (Note)

For Research Use Only , Not for Diagnostic Use.