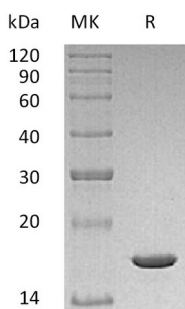


概述 (Summary)

英文全称	IL-1 beta/Interleukin-1 Beta/IL-1b/IL-1F2
纯度 (Purity)	Greater than 95% as determined by reducing SDS-PAGE
内毒素 (Endotoxin level)	<0.01 EU/μg as determined by LAL test.
蛋白构建 (Construction)	Recombinant Mouse Interleukin-1 Beta is produced by our E.coli expression system and the target gene encoding Val118-Ser269 is expressed.
Accession #	P10749
蛋白标签 (Tag)	
表达宿主 (Host)	E.coli
种属 (Species)	Mouse
预测分子量 (Predicted MW)	17.4 KDa
蛋白形态 (Form)	Lyophilized from a 0.2 μm filtered solution of 50mM Tris-HCl, 50mM NaCl, pH 8.0.
储存缓冲液 (Buffer)	
运输方式 (Shipping)	The product is shipped at ambient temperature. Upon receipt, store it immediately at the temperature listed below.
稳定性&储存 (Stability &Storage)	Lyophilized protein should be stored at $\leq -20^{\circ}\text{C}$, stable for one year after receipt. Reconstituted protein solution can be stored at $2-8^{\circ}\text{C}$ for 2-7 days. Aliquots of reconstituted samples are stable at $\leq -20^{\circ}\text{C}$ for 3 months.
复溶 (Reconstitution)	Always centrifuge tubes before opening. Do not mix by vortex or pipetting. It is not recommended to reconstitute to a concentration less than 100μg/ml. Dissolve the lyophilized protein in distilled water. Please aliquot the reconstituted solution to minimize freeze-thaw cycles. Always centrifuge tubes before opening. Do not mix by vortex or pipetting. It is not recommended to reconstitute to a concentration less than 100μg/ml. Dissolve the lyophilized protein in distilled water. Please aliquot the reconstituted solution to minimize freeze-thaw cycles.

电泳图 (SDS-PAGE image)

Product Name: Recombinant Mouse IL-1b
Catalog #: PEM0890



背景 (Background)

分子别名 (Alternative Names)

Interleukin-1 Beta; IL-1 Beta; Il1b

背景介绍 (References)

Interleukin-1 (IL-1) designates two proteins, IL-1 α and IL-1 β , which are the products of distinct genes, but recognize the same cell surface receptors. IL-1 α and IL-1 β are structurally related polypeptides that show approximately 25% homology at the amino acid level. Both proteins are produced by a wide variety of cells in response to stimuli such as those produced by inflammatory agents, infections, or microbial endotoxins. The proteins are synthesized as 31 kDa precursors that are subsequently cleaved into proteins with molecular weights of approximately 17.5 kDa. The specific protease responsible for the processing of IL-1 β , designated interleukin 1 β -converting enzyme (ICE), has been described. Mature human and mouse IL-1 β share approximately 75% amino acid sequence identity and human IL-1 β has been found to be active on murine cell lines.

注意事项 (Note)

For Research Use Only , Not for Diagnostic Use.