

产品名称: Recombinant Mouse IL-22 (E. coli)  
产品货号: PEM0906

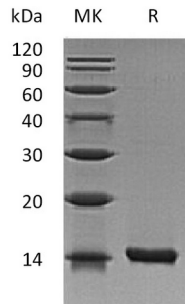


## 概述 (Summary)

英文全称	IL-22/Interleukin-22
纯度 (Purity)	Greater than 95% as determined by reducing SDS-PAGE
内毒素 (Endotoxin level)	<0.01 EU/μg as determined by LAL test.
蛋白构建 (Construction)	Recombinant Mouse Interleukin-22 is produced by our E.coli expression system and the target gene encoding Leu34-Val179 is expressed.
Accession #	Q9JJY9
表达宿主 (Host)	E.coli
种属 (Species)	Mouse
预测分子量 (Predicted MW)	16.7 KDa
制剂 (Form)	Lyophilized from a 0.2 μm filtered solution of 20mM PB, 150mM NaCl, pH 7.0.
运输方式 (Shipping)	The product is shipped at ambient temperature. Upon receipt, store it immediately at the temperature listed below.
稳定性&储存 (Stability &Storage)	Lyophilized protein should be stored at ≤ -20°C, stable for one year after receipt. Reconstituted protein solution can be stored at 2-8°C for 2-7 days. Aliquots of reconstituted samples are stable at ≤ -20°C for 3 months.
复溶 (Reconstitution)	Always centrifuge tubes before opening. Do not mix by vortex or pipetting. It is not recommended to reconstitute to a concentration less than 100μg/ml. Dissolve the lyophilized protein in distilled water. Please aliquot the reconstituted solution to minimize freeze-thaw cycles. Always centrifuge tubes before opening. Do not mix by vortex or pipetting. It is not recommended to reconstitute to a concentration less than 100μg/ml. Dissolve the lyophilized protein in distilled water. Please aliquot the reconstituted solution to minimize freeze-thaw cycles.

## 电泳图 (SDS-PAGE image)

产品名称: Recombinant Mouse IL-22 (E. coli)  
产品货号: PEM0906



## 背景 (Background)

### 分子别名 (Alternative Names)

Interleukin-22; IL-22; IL-10-Related T-Cell-Derived-Inducible Factor; IL-TIF; IL-TIF Alpha; Interleukin-22a; IL-22a; IL22; IL22a; Iltif; Iltifa

### 背景介绍 (References)

Interleukin-22 (IL-22) was initially identified as a gene induced by IL-9 in mouse T cells and mast cells. Mouse IL-22 cDNA encodes a 179 amino acid residue protein with a putative 33 amino acid signal peptide that is cleaved to generate a 147 amino acid mature protein that shares approximately 79% and 22% sequence identity with human IL22 and IL10, respectively. IL22 has been shown to activate STAT-1 and STAT-3 in several hepatoma cell lines and up-regulate the production of acute phase proteins. IL-22 is produced by normal mouse T cells upon Con A activation. Mouse IL-22 expression is also induced in various organs upon lipopolysaccharide injection, suggesting that IL-22 may be involved in inflammatory responses. The functional IL-22 receptor complex consists of two receptor subunits, IL-22R (previously an orphan receptor named CRF2-9) and IL-10R $\beta$  (previously known as CRF2-4), belonging to the class II cytokine receptor family.

## 注意事项 (Note)

For research use only .