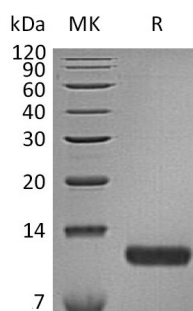


## 概述 (Summary)

英文全称	CCL17/C-C motif chemokine 17/TARC
纯度 (Purity)	Greater than 95% as determined by reducing SDS-PAGE
内毒素 (Endotoxin level)	<1 EU/μg as determined by LAL test.
蛋白构建 (Construction)	Recombinant Human C-C Motif Chemokine 17 is produced by our Mammalian expression system and the target gene encoding Ala24-Ser94 is expressed with a 6His tag at the C-terminus.
Accession #	Q92583
蛋白标签 (Tag)	
表达宿主 (Host)	Human Cells
种属 (Species)	Human
预测分子量 (Predicted MW)	9.1 KDa
蛋白形态 (Form)	Lyophilized from a 0.2 μm filtered solution of 20mM His-HCl, 10% Trehalose, 5% Maltose, 100mM NaCl, 0.1% Tween 80, pH 6.5.
储存缓冲液 (Buffer)	
运输方式 (Shipping)	The product is shipped at ambient temperature. Upon receipt, store it immediately at the temperature listed below.
稳定性&储存 (Stability &Storage)	Lyophilized protein should be stored at ≤ -20°C, stable for one year after receipt. Reconstituted protein solution can be stored at 2-8°C for 2-7 days. Aliquots of reconstituted samples are stable at ≤ -20°C for 3 months.
复溶 (Reconstitution)	Always centrifuge tubes before opening. Do not mix by vortex or pipetting. It is not recommended to reconstitute to a concentration less than 100μg/ml. Dissolve the lyophilized protein in distilled water. Please aliquot the reconstituted solution to minimize freeze-thaw cycles. Always centrifuge tubes before opening. Do not mix by vortex or pipetting. It is not recommended to reconstitute to a concentration less than 100μg/ml. Dissolve the lyophilized protein in distilled water. Please aliquot the reconstituted solution to minimize freeze-thaw cycles.

## 电泳图 (SDS-PAGE image)

**Product Name: Recombinant Human CCL17 (C-6His)**  
**Catalog #: PHH0250**



## 背景 (Background)

### 分子别名 (Alternative Names)

ABCD-2; CC chemokine TARC; C-C motif chemokine 17; CCL17; chemokine (C-C motif) ligand 17; MGC138273; SCYA17MGC138271; small inducible cytokine subfamily A (Cys-Cys), member 17; Small-inducible cytokine A17; T cell-directed CC chemokine; TARC; TARCA-152E5.3; Thymus and activation-regulated chemokine

### 背景介绍 (References)

C-C motif chemokine 17 (CCL17) is a novel CC chemokine, it belongs to the intercrine beta (chemokine CC) family. CCL17 is expressed at high levels in thymus, and at a lower level in lung, colon, and small intestine. CCL17 is also transiently expressed in stimulated peripheral blood mononuclear cells. Among CC chemokine family members, CCL17 has approximately 24 - 29% amino acid sequence identity with RANTES, MIP-1 alpha, MIP-1 beta, MCP-1, MCP-2 and MCP-3. CCL17 has been identified to be Chemotactic factor for T-lymphocytes but not monocytes or granulocytes. CCL17 plays a role in T-cell development in thymus and in trafficking and activation of mature T-cells.

## 注意事项 (Note)

For Research Use Only , Not for Diagnostic Use.