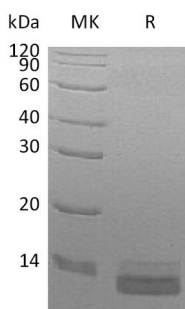


概述 (Summary)

英文全称	CCL14/HCC-1/HCC-3
纯度 (Purity)	Greater than 95% as determined by reducing SDS-PAGE
内毒素 (Endotoxin level)	<1 EU/μg as determined by LAL test.
蛋白构建 (Construction)	Recombinant Human C-C Motif Chemokine 14 is produced by our Mammalian expression system and the target gene encoding Thr20-Asn93 is expressed with a 6His tag at the C-terminus.
Accession #	Q16627
蛋白标签 (Tag)	
表达宿主 (Host)	Human Cells
种属 (Species)	Human
预测分子量 (Predicted MW)	9.71 KDa
蛋白形态 (Form)	Lyophilized from a 0.2 μm filtered solution of 20mM PB, 150mM NaCl, pH 7.2.
储存缓冲液 (Buffer)	
运输方式 (Shipping)	The product is shipped at ambient temperature. Upon receipt, store it immediately at the temperature listed below.
稳定性&储存 (Stability &Storage)	Lyophilized protein should be stored at ≤ -20°C, stable for one year after receipt. Reconstituted protein solution can be stored at 2-8°C for 2-7 days. Aliquots of reconstituted samples are stable at ≤ -20°C for 3 months.
复溶 (Reconstitution)	Always centrifuge tubes before opening. Do not mix by vortex or pipetting. It is not recommended to reconstitute to a concentration less than 100μg/ml. Dissolve the lyophilized protein in distilled water. Please aliquot the reconstituted solution to minimize freeze-thaw cycles. Always centrifuge tubes before opening. Do not mix by vortex or pipetting. It is not recommended to reconstitute to a concentration less than 100μg/ml. Dissolve the lyophilized protein in distilled water. Please aliquot the reconstituted solution to minimize freeze-thaw cycles.

电泳图 (SDS-PAGE image)

Product Name: Recombinant Human CCL14 (C-6His)
Catalog #: PHH0260



背景 (Background)

分子别名 (Alternative Names)

C-C Motif Chemokine 14; Chemokine CC-1/CC-3; HCC-1/HCC-3; HCC-1(1-74); NCC-2; Small-Inducible Cytokine A14; CCL14; NCC2; SCYA14

背景介绍 (References)

Chemokine (C-C motif) Ligand 14 (CCL14) is a small cytokine belonging to the CC chemokine family. It is produced as a protein precursor that is processed to generate a mature active protein containing 74 amino acids that and is 46% identical in amino acid composition to CCL3 and CCL4. This chemokine is expressed in various tissues including spleen, bone marrow, liver, muscle, and gut. CCL14 activates monocytes, but does not induce their chemotaxis. Human CCL14 is located on chromosome 17 within a cluster of other chemokines belonging to the CC family.

注意事项 (Note)

For Research Use Only , Not for Diagnostic Use.