

**Product Name: Recombinant Human CCL3L1 (C-6His)**  
**Catalog #: PHH0271**

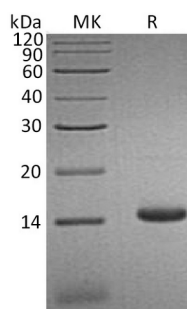


## 概述 (Summary)

英文全称	CCL3L1/MIP-1 alpha Isoform LD78 beta
纯度 (Purity)	Greater than 95% as determined by reducing SDS-PAGE
内毒素 (Endotoxin level)	<1 EU/μg as determined by LAL test.
蛋白构建 (Construction)	Recombinant Human C-C Motif Chemokine 3-Like 1 is produced by our Mammalian expression system and the target gene encoding Ala24-Ala93 is expressed with a 6His tag at the C-terminus.
Accession #	P16619
蛋白标签 (Tag)	
表达宿主 (Host)	Human Cells
种属 (Species)	Human
预测分子量 (Predicted MW)	8.82 KDa
蛋白形态 (Form)	Lyophilized from a 0.2 μm filtered solution of 20mM PB, 150mM NaCl, pH 7.4.
储存缓冲液 (Buffer)	
运输方式 (Shipping)	The product is shipped at ambient temperature. Upon receipt, store it immediately at the temperature listed below.
稳定性&储存 (Stability &Storage)	Lyophilized protein should be stored at ≤ -20°C, stable for one year after receipt. Reconstituted protein solution can be stored at 2-8°C for 2-7 days. Aliquots of reconstituted samples are stable at ≤ -20°C for 3 months.
复溶 (Reconstitution)	Always centrifuge tubes before opening. Do not mix by vortex or pipetting. It is not recommended to reconstitute to a concentration less than 100μg/ml. Dissolve the lyophilized protein in distilled water. Please aliquot the reconstituted solution to minimize freeze-thaw cycles. Always centrifuge tubes before opening. Do not mix by vortex or pipetting. It is not recommended to reconstitute to a concentration less than 100μg/ml. Dissolve the lyophilized protein in distilled water. Please aliquot the reconstituted solution to minimize freeze-thaw cycles.

## 电泳图 (SDS-PAGE image)

**Product Name: Recombinant Human CCL3L1 (C-6His)**  
**Catalog #: PHH0271**



## 背景 (Background)

### 分子别名 (Alternative Names)

C-C Motif Chemokine 3-Like 1; G0/G1 Switch Regulatory Protein 19-2; LD78-Beta(1-70); PAT 464.2; Small-Inducible Cytokine A3-Like 1; Tonsillar Lymphocyte LD78 Beta Protein; CCL3L1; D17S1718; G0S19-2; SCYA3L1; CCL3L3

### 背景介绍 (References)

C-C Motif Chemokine 3-Like 1 (CCL3L1) is a secreted protein that belongs to the intercrine beta (chemokine CC) family. CCL3L1 is a ligand for CCR1, CCR3 and CCR5. CCL3L1 binds to several chemokine receptors including chemokine binding protein 2 and chemokine (C-C motif) receptor 5 (CCR5). CCR5 is a co-receptor for HIV, and binding of this protein to CCR5 inhibits HIV entry. The processed form LD78-beta (3-70) shows a 20-fold to 30-fold higher chemotactic activity and is a very potent inhibitor of HIV-1-infection. The copy number of this gene varies among individuals: most individuals have 1-6 copies in the diploid genome, although rare individuals have zero or more than six copies. The human genome reference assembly contains two full copies of the gene (CCL3L3 and CCL3L1) and a partial pseudogene. This record represents the more centromeric full-length gene.

## 注意事项 (Note)

For Research Use Only , Not for Diagnostic Use.