

产品名称: Recombinant Human CSF2RA (C-6His)  
产品货号: PHH0285

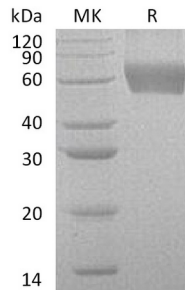


## 概述 (Summary)

英文全称	CD116/GM-CSF R alpha/CSF2RA
纯度 (Purity)	Greater than 95% as determined by reducing SDS-PAGE
内毒素 (Endotoxin level)	<1 EU/ $\mu$ g as determined by LAL test.
蛋白构建 (Construction)	Recombinant Human Granulocyte-Macrophage Colony-Stimulating Factor Receptor Subunit Alpha is produced by our Mammalian expression system and the target gene encoding Glu23-Gly320 is expressed with a 6His tag at the C-terminus.
Accession #	P15509
表达宿主 (Host)	Human Cells
种属 (Species)	Human
预测分子量 (Predicted MW)	35.5 KDa
制剂 (Form)	Lyophilized from a 0.2 $\mu$ m filtered solution of 20mM PB, 150mM NaCl, pH 7.4.
运输方式 (Shipping)	The product is shipped at ambient temperature. Upon receipt, store it immediately at the temperature listed below.
稳定性&储存 (Stability &Storage)	Lyophilized protein should be stored at $\leq -20^{\circ}\text{C}$ , stable for one year after receipt. Reconstituted protein solution can be stored at 2-8 $^{\circ}\text{C}$ for 2-7 days. Aliquots of reconstituted samples are stable at $\leq -20^{\circ}\text{C}$ for 3 months.
复溶 (Reconstitution)	Always centrifuge tubes before opening. Do not mix by vortex or pipetting. It is not recommended to reconstitute to a concentration less than 100 $\mu$ g/ml. Dissolve the lyophilized protein in distilled water. Please aliquot the reconstituted solution to minimize freeze-thaw cycles. Always centrifuge tubes before opening. Do not mix by vortex or pipetting. It is not recommended to reconstitute to a concentration less than 100 $\mu$ g/ml. Dissolve the lyophilized protein in distilled water. Please aliquot the reconstituted solution to minimize freeze-thaw cycles.

## 电泳图 (SDS-PAGE image)

产品名称: Recombinant Human CSF2RA (C-6His)  
产品货号: PHH0285



## 背景 (Background)

### 分子别名 (Alternative Names)

Granulocyte-Macrophage Colony-Stimulating Factor Receptor Subunit Alpha; GM-CSF-R-Alpha; GMCSFR-Alpha; GMR-Alpha; CDw116; CD116; CSF2RA; CSF2R; CSF2RY

### 背景介绍 (References)

Granulocyte-Macrophage Colony-Stimulating Factor Receptor Subunit  $\alpha$  (CSF2RA) is a single-pass type I membrane protein which belongs to the type I cytokine receptor family of Type 5 subfamily. The CSF2RA gene is found in the pseudoautosomal region (PAR) of the X and Y chromosomes with some of the isoforms being membrane-bound and others being soluble. CSF2RA is a low affinity receptor for granulocyte-macrophage colony-stimulating factor. CSF2RA transduces a signal that results in the proliferation, differentiation, and functional activation of hematopoietic cells. Defects in CSF2RA are the cause of pulmonary surfactant metabolism dysfunction type 4 (SMDP4).

## 注意事项 (Note)

For research use only .