

产品名称: Recombinant Human CD2 (C-6His)
产品货号: PHH0306

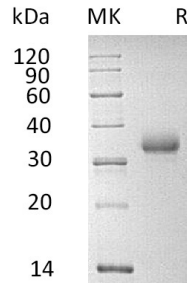


概述 (Summary)

英文全称	CD2/LFA-3 receptor
纯度 (Purity)	Greater than 95% as determined by reducing SDS-PAGE
内毒素 (Endotoxin level)	<1 EU/μg as determined by LAL test.
蛋白构建 (Construction)	Recombinant Human T-cell Surface Antigen CD2 is produced by our Mammalian expression system and the target gene encoding Lys25-Asp209 is expressed with a 6His tag at the C-terminus.
Accession #	P06729
表达宿主 (Host)	Human Cells
种属 (Species)	Human
预测分子量 (Predicted MW)	22.29 KDa
制剂 (Form)	Lyophilized from a 0.2 μm filtered solution of 20mM PB, 150mM NaCl, pH 7.4.
运输方式 (Shipping)	The product is shipped at ambient temperature. Upon receipt, store it immediately at the temperature listed below.
稳定性&储存 (Stability &Storage)	Lyophilized protein should be stored at ≤ -20°C, stable for one year after receipt. Reconstituted protein solution can be stored at 2-8°C for 2-7 days. Aliquots of reconstituted samples are stable at ≤ -20°C for 3 months.
复溶 (Reconstitution)	Always centrifuge tubes before opening. Do not mix by vortex or pipetting. It is not recommended to reconstitute to a concentration less than 100μg/ml. Dissolve the lyophilized protein in distilled water. Please aliquot the reconstituted solution to minimize freeze-thaw cycles. Always centrifuge tubes before opening. Do not mix by vortex or pipetting. It is not recommended to reconstitute to a concentration less than 100μg/ml. Dissolve the lyophilized protein in distilled water. Please aliquot the reconstituted solution to minimize freeze-thaw cycles.

电泳图 (SDS-PAGE image)

产品名称: Recombinant Human CD2 (C-6His)
产品货号: PHH0306



背景 (Background)

分子别名 (Alternative Names)

T-cell surface antigen CD2; Erythrocyte receptor; LFA-2; LFA-3 receptor; Rosette receptor; T-cell surface antigen T11/Leu-5

背景介绍 (References)

T-cell surface antigen CD2 is also known as Erythrocyte receptor, LFA-2, LFA-3 receptor, Rosette receptor, T-cell surface antigen T11/Leu-5. It is a protein that in humans is encoded by the CD2 gene. It is a single-pass type I membrane protein. contains 1 Ig-like C2-type domain and 1 Ig-like V-type domain. T-cell surface antigen CD2 interacts with lymphocyte function-associated antigen (LFA-3) and CD48/BCM1 to mediate adhesion between T-cells and other cell types. It is implicated in the triggering of T-cells, the cytoplasmic domain is implicated in the signaling function.

注意事项 (Note)

For research use only .