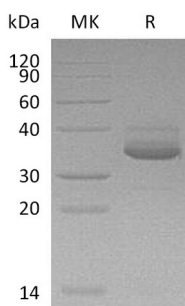


概述 (Summary)

| | |
|-----------------------------|---|
| 英文全称 | CXCL10/IP-10/CRG-2/INP10/SCYB10 |
| 纯度 (Purity) | Greater than 95% as determined by reducing SDS-PAGE |
| 内毒素 (Endotoxin level) | <1 EU/μg as determined by LAL test. |
| 蛋白构建 (Construction) | Recombinant Human C-X-C Motif Chemokine 10 is produced by our Mammalian expression system and the target gene encoding Val22-Pro98 is expressed with a human IgG1 Fc, 6His tag at the C-terminus. |
| Accession # | P02778 |
| 蛋白标签 (Tag) | |
| 表达宿主 (Host) | Human Cells |
| 种属 (Species) | Human |
| 预测分子量 (Predicted MW) | 36.6 KDa |
| 蛋白形态 (Form) | Lyophilized from a 0.2 μm filtered solution of PBS, pH 7.4. |
| 储存缓冲液 (Buffer) | |
| 运输方式 (Shipping) | The product is shipped at ambient temperature. Upon receipt, store it immediately at the temperature listed below. |
| 稳定性&储存 (Stability &Storage) | Lyophilized protein should be stored at ≤ -20°C, stable for one year after receipt. Reconstituted protein solution can be stored at 2-8°C for 2-7 days. Aliquots of reconstituted samples are stable at ≤ -20°C for 3 months. |
| 复溶 (Reconstitution) | Always centrifuge tubes before opening. Do not mix by vortex or pipetting. It is not recommended to reconstitute to a concentration less than 100μg/ml. Dissolve the lyophilized protein in distilled water. Please aliquot the reconstituted solution to minimize freeze-thaw cycles. Always centrifuge tubes before opening. Do not mix by vortex or pipetting. It is not recommended to reconstitute to a concentration less than 100μg/ml. Dissolve the lyophilized protein in distilled water. Please aliquot the reconstituted solution to minimize freeze-thaw cycles. |

电泳图 (SDS-PAGE image)

Product Name: Recombinant Human CXCL10 (C-Fc-6His)
Catalog #: PHH0466



背景 (Background)

分子别名 (Alternative Names)

C-X-C Motif Chemokine 10; 10 kDa Interferon Gamma-Induced Protein; Gamma-IP10; IP-10; Small-Inducible Cytokine B10; CXCL10; INP10; SCYB10

背景介绍 (References)

Human C-X-C Motif Chemokine Ligand 10 (CXCL10) is a non-ELR chemokine secreted by various cell types, such as monocytes, endothelial cells and fibroblasts, in response to IFN- γ . CXCL10 functions via chemokine receptor CXCR3. CXCL10 has been attributed to several roles, such as chemoattraction for activated T-lymphocytes, inhibition of angiogenesis, and antitumor activity.

注意事项 (Note)

For Research Use Only , Not for Diagnostic Use.