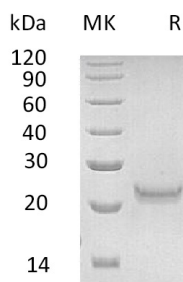


## 概述 (Summary)

英文全称	IFNW1/Interferon omega-1
纯度 (Purity)	Greater than 95% as determined by reducing SDS-PAGE
内毒素 (Endotoxin level)	<1 EU/ $\mu$ g as determined by LAL test.
蛋白构建 (Construction)	Recombinant Human Interferon Omega-1 is produced by our Mammalian expression system and the target gene encoding Leu22-Ser195 is expressed with a 6His tag at the C-terminus.
Accession #	P05000
蛋白标签 (Tag)	
表达宿主 (Host)	Human Cells
种属 (Species)	Human
预测分子量 (Predicted MW)	21.1 KDa
蛋白形态 (Form)	Lyophilized from a 0.2 $\mu$ m filtered solution of 20mM PB, 150mM NaCl, pH 7.4.
储存缓冲液 (Buffer)	
运输方式 (Shipping)	The product is shipped at ambient temperature. Upon receipt, store it immediately at the temperature listed below.
稳定性&储存 (Stability &Storage)	Lyophilized protein should be stored at $\leq -20^{\circ}\text{C}$ , stable for one year after receipt. Reconstituted protein solution can be stored at 2-8 $^{\circ}\text{C}$ for 2-7 days. Aliquots of reconstituted samples are stable at $\leq -20^{\circ}\text{C}$ for 3 months.
复溶 (Reconstitution)	Always centrifuge tubes before opening. Do not mix by vortex or pipetting. It is not recommended to reconstitute to a concentration less than 100 $\mu$ g/ml. Dissolve the lyophilized protein in distilled water. Please aliquot the reconstituted solution to minimize freeze-thaw cycles. Always centrifuge tubes before opening. Do not mix by vortex or pipetting. It is not recommended to reconstitute to a concentration less than 100 $\mu$ g/ml. Dissolve the lyophilized protein in distilled water. Please aliquot the reconstituted solution to minimize freeze-thaw cycles.

## 电泳图 (SDS-PAGE image)

**Product Name: Recombinant Human IFNW1 (C-6His)**  
**Catalog #: PHH0835**



## 背景 (Background)

### 分子别名 (Alternative Names)

Interferon omega-1; Interferon alpha-II-1; IFNW1.

### 背景介绍 (References)

Interferon omega-1 is also known as Interferon alpha-II-1 and IFNW1. It is a secreted protein that in humans is encoded by the IFNW1 gene. IFNW1 belongs to the alpha/beta interferon family. Type I IFNs consist of IFN  $\alpha$ ,  $\beta$ ,  $\tau$ , and  $\omega$  and bind to the type I IFN receptor, whereas IFN- $\gamma$  is the only type II IFN and is specific for the type II IFN receptor. IFNW1 is a recently discovered protein structurally related to IFN-alpha and -beta. It has been shown that IFN-omega 1 is similar to that of other human class I IFNs; potent antiviral activity was also observed on cells of bovine and ovine but not of equine or murine origin.

## 注意事项 (Note)

For Research Use Only, Not for Diagnostic Use.