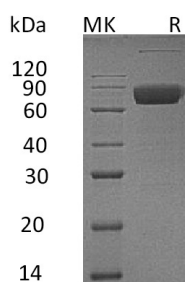


概述 (Summary)

英文全称	IL-10RB/Interleukin-10 receptor subunit beta
纯度 (Purity)	Greater than 95% as determined by reducing SDS-PAGE
内毒素 (Endotoxin level)	<1 EU/μg as determined by LAL test.
蛋白构建 (Construction)	Recombinant Human Interleukin-10 Receptor Subunit Beta is produced by our Mammalian expression system and the target gene encoding Met20-Ser220 is expressed with a human IgG1 Fc tag at the C-terminus.
Accession #	Q08334
蛋白标签 (Tag)	
表达宿主 (Host)	Human Cells
种属 (Species)	Human
预测分子量 (Predicted MW)	50.6 KDa
蛋白形态 (Form)	Lyophilized from a 0.2 μm filtered solution of PBS, pH 7.4.
储存缓冲液 (Buffer)	
运输方式 (Shipping)	The product is shipped at ambient temperature. Upon receipt, store it immediately at the temperature listed below.
稳定性&储存 (Stability &Storage)	Lyophilized protein should be stored at $\leq -20^{\circ}\text{C}$, stable for one year after receipt. Reconstituted protein solution can be stored at $2-8^{\circ}\text{C}$ for 2-7 days. Aliquots of reconstituted samples are stable at $\leq -20^{\circ}\text{C}$ for 3 months.
复溶 (Reconstitution)	Always centrifuge tubes before opening. Do not mix by vortex or pipetting. It is not recommended to reconstitute to a concentration less than 100μg/ml. Dissolve the lyophilized protein in distilled water. Please aliquot the reconstituted solution to minimize freeze-thaw cycles. Always centrifuge tubes before opening. Do not mix by vortex or pipetting. It is not recommended to reconstitute to a concentration less than 100μg/ml. Dissolve the lyophilized protein in distilled water. Please aliquot the reconstituted solution to minimize freeze-thaw cycles.

电泳图 (SDS-PAGE image)

Product Name: Recombinant Human IL-10RB (C-Fc)
Catalog #: PHH0860



背景 (Background)

分子别名 (Alternative Names)

Interleukin-10 receptor subunit beta(IL10RB);Cytokine receptor class-II member 4;Cytokine receptor family 2 member 4;Interleukin-10 receptor subunit 2;

背景介绍 (References)

Interleukin-10 receptor subunit beta(IL10RB), also known as Cytokine receptor class-II member 4,Cytokine receptor family 2 member 4,Interleukin-10 receptor subunit 2, belongs to the type II cytokine receptor family. IL10RB is a single- pass type I membrane protein and contains two fibronectin type-III domains. It is an accessory chain which is essential for the active interleukin 10 receptor complex. Coexpression of IL10RB and IL10RA proteins has been shown to be required for IL10-induced signal transduction. Defects in IL10RB are the cause of inflammatory bowel disease type 25 (IBD25) which is a chronic, relapsing inflammation of the gastrointestinal tract with a complex etiology.

注意事项 (Note)

For Research Use Only , Not for Diagnostic Use.