

Product Name: Recombinant Human IL-15RA&IL-15 (C-Fc)
Catalog #: PHH0872

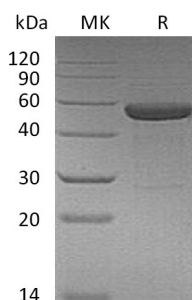


概述 (Summary)

英文全称	IL-15RA&IL-15 Complex/IL-15 R alpha & IL-15 Fusion Protein/IL15RA&IL15
纯度 (Purity)	Greater than 95% as determined by reducing SDS-PAGE
内毒素 (Endotoxin level)	<1 EU/μg as determined by LAL test.
蛋白构建 (Construction)	Recombinant Human Interleukin-15 Receptor Alpha & Interleukin-15 Fusion Protein is produced by our Mammalian expression system and the target gene encoding Ile31-Asp96&Asn49-Ser162(Asn120Asp) is expressed with a human IgG1 Fc tag at the C-terminus.
Accession #	Q13261&P40933
蛋白标签 (Tag)	
表达宿主 (Host)	Human Cells
种属 (Species)	Human
预测分子量 (Predicted MW)	46.9 KDa
蛋白形态 (Form)	Lyophilized from a 0.2 μm filtered solution of 20mM PB, 8% Trehalose, 4% Mannitol, 0.02% Tween80 (w/v), pH 7.5.
储存缓冲液 (Buffer)	
运输方式 (Shipping)	The product is shipped at ambient temperature. Upon receipt, store it immediately at the temperature listed below.
稳定性&储存 (Stability &Storage)	Lyophilized protein should be stored at ≤ -20°C, stable for one year after receipt. Reconstituted protein solution can be stored at 2-8°C for 2-7 days. Aliquots of reconstituted samples are stable at ≤ -20°C for 3 months.
复溶 (Reconstitution)	Always centrifuge tubes before opening. Do not mix by vortex or pipetting. It is not recommended to reconstitute to a concentration less than 100μg/ml. Dissolve the lyophilized protein in distilled water. Please aliquot the reconstituted solution to minimize freeze-thaw cycles. Always centrifuge tubes before opening. Do not mix by vortex or pipetting. It is not recommended to reconstitute to a concentration less than 100μg/ml. Dissolve the lyophilized protein in distilled water. Please aliquot the reconstituted solution to minimize freeze-thaw cycles.

电泳图 (SDS-PAGE image)

Product Name: Recombinant Human IL-15RA&IL-15 (C-Fc)
Catalog #: PHH0872



背景 (Background)

分子别名 (Alternative Names)

IL15RA&IL15; Interleukin-15; IL-15; IL15; IL-15 receptor subunit alpha; IL-15RA; IL-15R-alpha; interleukin-15 receptor subunit alpha

背景介绍 (References)

IL15RA is a high-affinity receptor for interleukin-15. IL15ra associates as a heterotrimer with the IL-2 receptor beta and gamma subunits to initiate signal transduction. It can signal both in cis and trans where IL15R from one subset of cells presents IL15 to neighboring IL2RG-expressing cells. IL15ra is expressed in special cells including a wide variety of T and B cells and non-lymphoid cells. IL-15 is a cytokine that regulates T cell and natural killer cell activation and proliferation. IL-15 binds to the alpha subunit of the IL-15RA with high affinity. IL-15 also binds to the beta and gamma chains of the IL-2 receptor, but not the alpha subunit of the IL2 receptor. IL-15 is structurally and functionally related to IL-2. Both cytokines share some subunits of receptors, allowing them to compete for and negatively regulate each others activity. The number of CD8+ memory T cells is controlled by a balance between IL-15 and IL-2. Despite their many overlapping functional properties, IL-2 and IL-15 are, in fact, quite distinct players in the immune system. IL-15 is constitutively expressed by a wide variety of cell types and tissues, including monocytes, macrophages and DCs.

注意事项 (Note)

For Research Use Only , Not for Diagnostic Use.