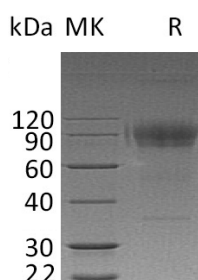


概述 (Summary)

英文全称	IL-2 R gamma/IL-2RG/CD132/Common gamma Chain
纯度 (Purity)	Greater than 95% as determined by reducing SDS-PAGE
内毒素 (Endotoxin level)	<1 EU/μg as determined by LAL test.
蛋白构建 (Construction)	Recombinant Human Cytokine Receptor Common Subunit Gamma is produced by our Mammalian expression system and the target gene encoding Leu23-Ala262 is expressed with a human IgG1 Fc tag at the C-terminus.
Accession #	P31785
蛋白标签 (Tag)	
表达宿主 (Host)	Human Cells
种属 (Species)	Human
预测分子量 (Predicted MW)	55.4 KDa
蛋白形态 (Form)	Lyophilized from a 0.2 μm filtered solution of PBS, pH 7.4.
储存缓冲液 (Buffer)	
运输方式 (Shipping)	The product is shipped at ambient temperature. Upon receipt, store it immediately at the temperature listed below.
稳定性&储存 (Stability &Storage)	Lyophilized protein should be stored at ≤ -20°C, stable for one year after receipt. Reconstituted protein solution can be stored at 2-8°C for 2-7 days. Aliquots of reconstituted samples are stable at ≤ -20°C for 3 months.
复溶 (Reconstitution)	Always centrifuge tubes before opening. Do not mix by vortex or pipetting. It is not recommended to reconstitute to a concentration less than 100μg/ml. Dissolve the lyophilized protein in distilled water. Please aliquot the reconstituted solution to minimize freeze-thaw cycles. Always centrifuge tubes before opening. Do not mix by vortex or pipetting. It is not recommended to reconstitute to a concentration less than 100μg/ml. Dissolve the lyophilized protein in distilled water. Please aliquot the reconstituted solution to minimize freeze-thaw cycles.

电泳图 (SDS-PAGE image)

Product Name: Recombinant Human IL-2RG (C-Fc)
Catalog #: PHH0918



背景 (Background)

分子别名 (Alternative Names)

Cytokine receptor common subunit gamma; IL2RG; Interleukin-2 receptor subunit gamma; IL-2 receptor subunit gamma; IL-2R subunit gamma; gammaC

背景介绍 (References)

IL2RG contains one fibronectin type-III domain. IL2RG is an important signaling component of many interleukin receptors, including those of interleukin -2, -4, -7 and -21, and is thus referred to as the common gamma chain. IL2RG interacts with SHB upon interleukin stimulation and HTLV-1 accessory protein p12l. Defects in IL2RG are the cause of X-linked combined immunodeficiency (XCID) and severe combined immunodeficiency X-linked T-cell-negative /B-cell-positive / NK-cell-negative (XSCID).

注意事项 (Note)

For Research Use Only , Not for Diagnostic Use.