

产品名称: Recombinant Human MPZL1 (C-6His)
产品货号: PHH1185

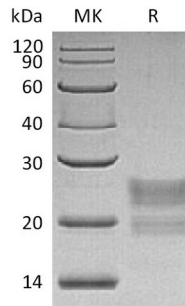


概述 (Summary)

英文全称	Myelin protein zero-like 1/MPZL1
纯度 (Purity)	Greater than 95% as determined by reducing SDS-PAGE
内毒素 (Endotoxin level)	<1 EU/μg as determined by LAL test.
蛋白构建 (Construction)	Recombinant Human Myelin Protein P0-like 1 is produced by our Mammalian expression system and the target gene encoding Ser36-Val162 is expressed with a 6His tag at the C-terminus.
Accession #	O95297
表达宿主 (Host)	Human Cells
种属 (Species)	Human
预测分子量 (Predicted MW)	15.2 KDa
制剂 (Form)	Lyophilized from a 0.2 μm filtered solution of 20mM PB, 150mM NaCl, pH 7.4.
运输方式 (Shipping)	The product is shipped at ambient temperature. Upon receipt, store it immediately at the temperature listed below.
稳定性&储存 (Stability &Storage)	Lyophilized protein should be stored at ≤ -20°C, stable for one year after receipt. Reconstituted protein solution can be stored at 2-8°C for 2-7 days. Aliquots of reconstituted samples are stable at ≤ -20°C for 3 months.
复溶 (Reconstitution)	Always centrifuge tubes before opening. Do not mix by vortex or pipetting. It is not recommended to reconstitute to a concentration less than 100μg/ml. Dissolve the lyophilized protein in distilled water. Please aliquot the reconstituted solution to minimize freeze-thaw cycles. Always centrifuge tubes before opening. Do not mix by vortex or pipetting. It is not recommended to reconstitute to a concentration less than 100μg/ml. Dissolve the lyophilized protein in distilled water. Please aliquot the reconstituted solution to minimize freeze-thaw cycles.

电泳图 (SDS-PAGE image)

产品名称: Recombinant Human MPZL1 (C-6His)
产品货号: PHH1185



背景 (Background)

分子别名 (Alternative Names)

Myelin protein zero-like 1; isoform CRA_b;cDNA FLJ78597; highly similar to Homo sapiens myelin protein zero-like 1 (MPZL1); transcript variant 1; mRNA ;cDNA; FLJ96614; Homo sapiens myelin protein zero-like 1 (MPZL1); Mrna

背景介绍 (References)

Myelin protein zero-like protein 1(MPZL1) is encoded by the MPZL1 gene, which is a single-pass type I membrane protein. It is widely expressed with highest levels in heart, placenta, kidney and pancreas. As cell surface receptor, it involved in signal transduction processes. MPZL1 recruits PTPN11/SHP-2 to the cell membrane and subsequently activate/phosphorylate Src kinase at Tyr426, promoting phosphorylation of cortactin and migration of HCC cells. MPZL1also is a major receptor for concanavalin-A (ConA) and involved in cellular signaling induced by ConA, which probably includes Src family tyrosine-protein kinases.

注意事项 (Note)

For research use only .