

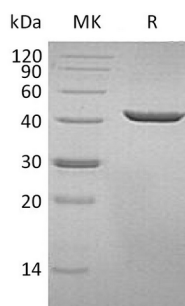
产品名称: Recombinant Human SEPHS1 (C-6His)
产品货号: PHH1479



概述 (Summary)

英文全称	Selenophosphate synthase 1/SEPHS1
纯度 (Purity)	Greater than 95% as determined by reducing SDS-PAGE
内毒素 (Endotoxin level)	<1 EU/μg as determined by LAL test.
蛋白构建 (Construction)	Recombinant Human Selenophosphate Synthase is produced by our Mammalian expression system and the target gene encoding Met1-Ser392 is expressed with a 6His tag at the C-terminus.
Accession #	P49903
表达宿主 (Host)	Human Cells
种属 (Species)	Human
预测分子量 (Predicted MW)	43.9 KDa
制剂 (Form)	Supplied as a 0.2 μm filtered solution of 25mM Tris-HCl, 100mM glycine, 10% Glycerol, pH 7.3.
运输方式 (Shipping)	The product is shipped on dry ice/polar packs. Upon receipt, store it immediately at the temperature listed below.
稳定性&储存 (Stability &Storage)	Store at ≤-70°C, stable for 6 months after receipt. Store at ≤-70°C, stable for 3 months under sterile conditions after opening. Please minimize freeze-thaw cycles.
复溶 (Reconstitution)	

电泳图 (SDS-PAGE image)



背景 (Background)

产品名称: Recombinant Human SEPHS1 (C-6His)
产品货号: PHH1479



分子别名 (Alternative Names)

Selenide; water dikinase 1;Selenium donor protein 1;Selenophosphate synthase 1;SEPHS1;SELD; SPS; SPS1

背景介绍 (References)

Selenophosphate synthetase 1 (SEPHS1) belongs to the selenophosphate synthase 1 family, Class II subfamily. It has four different isoforms by alternative splicing. Isoform 1 and isoform 2 are gradually expressed during the cell cycle until G2/M phase and then decreased, which Isoform 3 is gradually expressed during the cell cycle until S phase and then decreased. SEPHS1 can be activated by phosphate ions and by potassium ions. It can synthesize synthesizes selenophosphate from selenide and ATP. Selenophosphate is the selenium donor used to synthesize selenocysteine, which is co-translationally incorporated into selenoproteins at in-frame UGA codons.

注意事项 (Note)

For research use only .