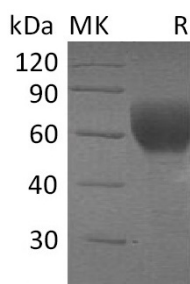


## 概述 (Summary)

英文全称	TGFBR2/TGF-beta RII/TGF-beta receptor type-2/Transforming Growth Factor- $\beta$ Receptor Type II
纯度 (Purity)	Greater than 95% as determined by reducing SDS-PAGE
内毒素 (Endotoxin level)	<1 EU/ $\mu$ g as determined by LAL test.
蛋白构建 (Construction)	Recombinant Human Transforming Growth Factor-beta Receptor Type II is produced by our Mammalian expression system and the target gene encoding Thr23-Asp159 is expressed with a human IgG1 Fc tag at the C-terminus.
Accession #	P37173
蛋白标签 (Tag)	
表达宿主 (Host)	Human Cells
种属 (Species)	Human
预测分子量 (Predicted MW)	42.6 KDa
蛋白形态 (Form)	Lyophilized from a 0.2 $\mu$ m filtered solution of 20mM PB, 150mM NaCl, pH 7.4.
储存缓冲液 (Buffer)	
运输方式 (Shipping)	The product is shipped at ambient temperature. Upon receipt, store it immediately at the temperature listed below.
稳定性&储存 (Stability &Storage)	Lyophilized protein should be stored at $\leq -20^{\circ}\text{C}$ , stable for one year after receipt. Reconstituted protein solution can be stored at $2-8^{\circ}\text{C}$ for 2-7 days. Aliquots of reconstituted samples are stable at $\leq -20^{\circ}\text{C}$ for 3 months.
复溶 (Reconstitution)	Always centrifuge tubes before opening. Do not mix by vortex or pipetting. It is not recommended to reconstitute to a concentration less than 100 $\mu$ g/ml. Dissolve the lyophilized protein in distilled water. Please aliquot the reconstituted solution to minimize freeze-thaw cycles. Always centrifuge tubes before opening. Do not mix by vortex or pipetting. It is not recommended to reconstitute to a concentration less than 100 $\mu$ g/ml. Dissolve the lyophilized protein in distilled water. Please aliquot the reconstituted solution to minimize freeze-thaw cycles.

## 电泳图 (SDS-PAGE image)

**Product Name: Recombinant Human TGFBR2 (C-Fc)**  
**Catalog #: PHH1625**



## 背景 (Background)

### 分子别名 (Alternative Names)

TGF-beta receptor type-2; TGF-beta type II receptor; TGFBR2; Transforming growth factor-beta receptor type II

### 背景介绍 (References)

TGFBR2 is a single-pass type I membrane protein and contains one protein kinase domain. TGFBR2 exists as a heterodimeric complex with another receptor protein and binds TGF-beta. Signals triggered through the TGF-beta receptor complex prompt various responses by the cell. One such response is to inhibit cell growth and division. Based on this action, the TGF-beta receptor type 2 is sometimes called a tumor suppressor. Defects in TGFBR2 have been associated with Marfan syndrome, Loeys-Deitz aortic aneurysm syndrome, Osler-Weber-Rendu syndrome and the development of various types of tumors.

## 注意事项 (Note)

For Research Use Only , Not for Diagnostic Use.