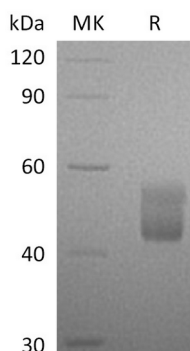


## 概述 (Summary)

<b>英文全称</b>	CFHR3/Complement Factor H-related Protein 3
<b>纯度 (Purity)</b>	Greater than 95% as determined by reducing SDS-PAGE
<b>内毒素 (Endotoxin level)</b>	<1 EU/μg as determined by LAL test.
<b>蛋白构建 (Construction)</b>	Recombinant Human Complement Factor H-related Protein 3 is produced by our Mammalian expression system and the target gene encoding Gln19-Glu330 is expressed with a 6His tag at the C-terminus.
<b>Accession #</b>	Q02985
<b>蛋白标签 (Tag)</b>	
<b>表达宿主 (Host)</b>	Human Cells
<b>种属 (Species)</b>	Human
<b>预测分子量 (Predicted MW)</b>	36.4 KDa
<b>蛋白形态 (Form)</b>	Lyophilized from a 0.2 μm filtered solution of PBS, pH 7.4.
<b>储存缓冲液 (Buffer)</b>	
<b>运输方式 (Shipping)</b>	The product is shipped at ambient temperature. Upon receipt, store it immediately at the temperature listed below.
<b>稳定性&amp;储存 (Stability &amp;Storage)</b>	Store at ≤-70°C, stable for 6 months after receipt. Store at ≤-70°C, stable for 3 months under sterile conditions after opening. Please minimize freeze-thaw cycles.
<b>复溶 (Reconstitution)</b>	Always centrifuge tubes before opening. Do not mix by vortex or pipetting. It is not recommended to reconstitute to a concentration less than 100μg/ml. Dissolve the lyophilized protein in distilled water. Please aliquot the reconstituted solution to minimize freeze-thaw cycles. Always centrifuge tubes before opening. Do not mix by vortex or pipetting. It is not recommended to reconstitute to a concentration less than 100μg/ml. Dissolve the lyophilized protein in distilled water. Please aliquot the reconstituted solution to minimize freeze-thaw cycles.

## 电泳图 (SDS-PAGE image)

**Product Name: Recombinant Human CFHR3 (C-6His)**  
**Catalog #: PHH1908**



## 背景 (Background)

### 分子别名 (Alternative Names)

Complement factor H-related protein 3; FHR-3; DOWN16; H factor-like protein 3; CFHR3; CFHL3

### 背景介绍 (References)

Complement factor H-related protein 3 is a protein that in humans is encoded by the CFHR3 gene. It is a secreted protein that belongs to the complement factor H protein family. Members of the H-related protein family are exclusively composed of individually folded protein domains. CFHR3 is synthesized as a 330 amino acid precursor that contains an 18 amino acid signal peptide and a 312 amino acid mature chain. Human CFHR3 protein might be involved in complement regulation.

## 注意事项 (Note)

For Research Use Only , Not for Diagnostic Use.