

产品名称: Recombinant Human CD3E (C-mFc)  
产品货号: PHH2099

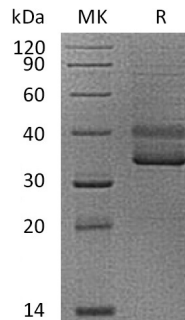


## 概述 (Summary)

英文全称	CD3E/CD3 epsilon/CD3ε/T-cell surface glycoprotein CD3 epsilon chain
纯度 (Purity)	Greater than 95% as determined by reducing SDS-PAGE
内毒素 (Endotoxin level)	<1 EU/μg as determined by LAL test.
蛋白构建 (Construction)	Recombinant Human T-Cell Surface Glycoprotein CD3 Epsilon Chain is produced by our Mammalian expression system and the target gene encoding Gln22-Thr48 is expressed with a mouse IgG1 Fc tag at the C-terminus.
Accession #	P07766
表达宿主 (Host)	Human Cells
种属 (Species)	Human
预测分子量 (Predicted MW)	28.5 KDa
制剂 (Form)	Lyophilized from a 0.2 μm filtered solution of PBS, pH 7.4.
运输方式 (Shipping)	The product is shipped at ambient temperature. Upon receipt, store it immediately at the temperature listed below.
稳定性&储存 (Stability &Storage)	Lyophilized protein should be stored at ≤ -20°C, stable for one year after receipt. Reconstituted protein solution can be stored at 2-8°C for 2-7 days. Aliquots of reconstituted samples are stable at ≤ -20°C for 3 months.
复溶 (Reconstitution)	Always centrifuge tubes before opening. Do not mix by vortex or pipetting. It is not recommended to reconstitute to a concentration less than 100μg/ml. Dissolve the lyophilized protein in distilled water. Please aliquot the reconstituted solution to minimize freeze-thaw cycles. Always centrifuge tubes before opening. Do not mix by vortex or pipetting. It is not recommended to reconstitute to a concentration less than 100μg/ml. Dissolve the lyophilized protein in distilled water. Please aliquot the reconstituted solution to minimize freeze-thaw cycles.

## 电泳图 (SDS-PAGE image)

产品名称: Recombinant Human CD3E (C-mFc)  
产品货号: PHH2099



## 背景 (Background)

### 分子别名 (Alternative Names)

T-Cell Surface Glycoprotein CD3 Epsilon Chain; T-Cell Surface Antigen T3/Leu-4 Epsilon Chain; CD3ε; CD3E; T3E

### 背景介绍 (References)

T-Cell Surface Glycoprotein CD3 ε Chain (CD3ε) is a single-pass type I membrane protein. CD3ε contains 1 Ig-like (immunoglobulin-like) domain and 1 ITAM domain. CD3ε is a polypeptide encoded by the CD3E gene on chromosome 11 in humans. The T cell receptor-CD3 complex (TCR/CD3 complex) is involved in T-cell development and several intracellular signal-transduction pathways. This complex is critical for T-cell development and function, and represents one of the most complex transmembrane receptors. The T cell receptor-CD3 complex is unique in having ten cytoplasmic immunoreceptor tyrosine-based activation motifs (ITAMs). TCR/CD3 complex plays an important role in coupling antigen recognition to several intracellular signal-transduction pathways.

## 注意事项 (Note)

For research use only .