

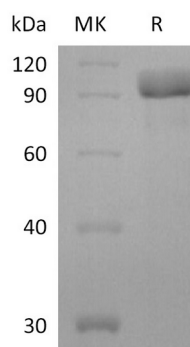
产品名称: Recombinant Human HER3 (C-6His)  
产品货号: PHH2135



## 概述 (Summary)

英文全称	HER3/Receptor Tyrosine-Protein Kinase ErbB-3/ERBB3 (Ser20-Thr643)
纯度 (Purity)	Greater than 95% as determined by reducing SDS-PAGE
内毒素 (Endotoxin level)	<1 EU/ $\mu$ g as determined by LAL test.
蛋白构建 (Construction)	Recombinant Human Receptor Tyrosine-Protein Kinase ErbB-3 is produced by our Mammalian expression system and the target gene encoding Ser20-Thr643 is expressed with a 6His tag at the C-terminus.
Accession #	P21860
表达宿主 (Host)	Human Cells
种属 (Species)	Human
预测分子量 (Predicted MW)	69.5 KDa
制剂 (Form)	Supplied as a 0.2 $\mu$ m filtered solution of PBS, 50% Glycerol, pH7.4.
运输方式 (Shipping)	The product is shipped on dry ice/polar packs. Upon receipt, store it immediately at the temperature listed below.
稳定性&储存 (Stability &Storage)	Store at $\leq -70^{\circ}\text{C}$ , stable for 6 months after receipt. Store at $\leq -70^{\circ}\text{C}$ , stable for 3 months under sterile conditions after opening. Please minimize freeze-thaw cycles.
复溶 (Reconstitution)	

## 电泳图 (SDS-PAGE image)



## 背景 (Background)

产品名称: Recombinant Human HER3 (C-6His)  
产品货号: PHH2135



---

**分子别名 (Alternative Names)**

Proto-oncogene-like protein c-ErbB-3; Tyrosine kinase-type cell surface receptor HER3; ERBB3; HER3

**背景介绍 (References)**

Receptor tyrosine-protein kinase erbB-3 is an enzyme that in humans is encoded by the ERBB3 gene. This gene encodes a member of the epidermal growth factor receptor (EGFR) family of receptor tyrosine kinases. ERBB3 belongs to the protein kinase superfamily, tyr protein kinase family and EGF receptor subfamily. It contains 1 protein kinase domain and it is expressed in Epithelial tissues and brain. This membrane-bound protein has a neuregulin binding domain but not an active kinase domain. It therefore can bind this ligand but not convey the signal into the cell through protein phosphorylation. However, it does form heterodimers with other EGF receptor family members which do have kinase activity.

**注意事项 (Note)**

For research use only .