

产品名称: Recombinant Human Siglec-8 (C-Fc)  
产品货号: PHH2200

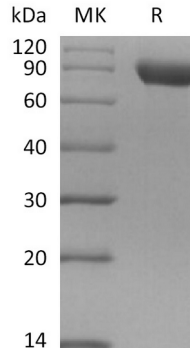


## 概述 (Summary)

英文全称	Siglec-8
纯度 (Purity)	Greater than 95% as determined by reducing SDS-PAGE
内毒素 (Endotoxin level)	<1 EU/μg as determined by LAL test.
蛋白构建 (Construction)	Recombinant Human Sialic Acid-binding Ig-like Lectin 8 is produced by our Mammalian expression system and the target gene encoding Met17-Ala363 is expressed with a human IgG1 Fc tag at the C-terminus.
Accession #	Q9NYZ4
表达宿主 (Host)	Human Cells
种属 (Species)	Human
预测分子量 (Predicted MW)	64.7 KDa
制剂 (Form)	Lyophilized from a 0.2 μm filtered solution of PBS, pH 7.4.
运输方式 (Shipping)	The product is shipped at ambient temperature. Upon receipt, store it immediately at the temperature listed below.
稳定性&储存 (Stability &Storage)	Lyophilized protein should be stored at ≤ -20°C, stable for one year after receipt. Reconstituted protein solution can be stored at 2-8°C for 2-7 days. Aliquots of reconstituted samples are stable at ≤ -20°C for 3 months.
复溶 (Reconstitution)	Always centrifuge tubes before opening. Do not mix by vortex or pipetting. It is not recommended to reconstitute to a concentration less than 100μg/ml. Dissolve the lyophilized protein in distilled water. Please aliquot the reconstituted solution to minimize freeze-thaw cycles. Always centrifuge tubes before opening. Do not mix by vortex or pipetting. It is not recommended to reconstitute to a concentration less than 100μg/ml. Dissolve the lyophilized protein in distilled water. Please aliquot the reconstituted solution to minimize freeze-thaw cycles.

## 电泳图 (SDS-PAGE image)

产品名称: Recombinant Human Siglec-8 (C-Fc)  
产品货号: PHH2200



## 背景 (Background)

### 分子别名 (Alternative Names)

Siglec8; Siglec-8; SAF2; SAF2SAF-2; SAF-2; CD329 antigen; CDw329

### 背景介绍 (References)

Siglec-8 is also known as SIGLEC8, SAF2, SIGLEC-8, SIGLEC8L and sialic acid binding Ig like lectin 8, is an approximately 75 kDa transmembrane glycoprotein in the Siglec family of sialic acid-binding immune regulatory molecules. Siglec-8 is expressed on eosinophils, basophils, and mast cells, and it shows a binding preference for the carbohydrate 6-O sulfated sLex. At the tissue level, Siglec-8 mRNA was found to be most highly expressed in lung, PBMCs, spleen, and kidney. Mature human Siglec-8 consists of a 347 amino acid (aa) extracellular domain (ECD) with three Ig-like domains, a 21 aa transmembrane segment, and a 115 aa cytoplasmic domain with two tyrosine based signaling motifs. Alternative splicing generates additional isoforms that either lack most of the second Ig-like domain or have a substituted cytoplasmic domain without the signaling motifs. Cross-linking of Siglec-8 inhibits Fc epsilon RI alpha induced mast cell degranulation (9). It also induces eosinophil apoptosis, an effect which is enhanced by the eosinophil-activating cytokines IL-5, IL-33, and GM-CSF.

## 注意事项 (Note)

For research use only .