

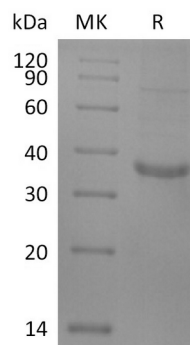
产品名称: Recombinant Human CD20 (C-Flag)
产品货号: PHH2421



概述 (Summary)

英文全称	CD20/B-lymphocyte antigen CD20
纯度 (Purity)	Greater than 95% as determined by reducing SDS-PAGE
内毒素 (Endotoxin level)	<1 EU/ μ g as determined by LAL test.
蛋白构建 (Construction)	Recombinant Human B-lymphocyte antigen CD20 is produced by our Mammalian expression system and the target gene encoding Met1-Pro297 is expressed with a Flag tag at the C-terminus.*The product is not recommended for cell based experiments.
Accession #	P11836
表达宿主 (Host)	Human cells
种属 (Species)	Human
预测分子量 (Predicted MW)	34.3 KDa
制剂 (Form)	Supplied as a 0.2 μ m filtered solution of 50mM HEPES, 150mM NaCl, 0.06% DDM, 0.012% CHS, 10% Glycerol, pH 7.4.
运输方式 (Shipping)	The product is shipped on dry ice/polar packs. Upon receipt, store it immediately at the temperature listed below.
稳定性&储存 (Stability &Storage)	Store at $\leq -70^{\circ}\text{C}$, stable for 6 months after receipt. Store at $\leq -70^{\circ}\text{C}$, stable for 3 months under sterile conditions after opening. Please minimize freeze-thaw cycles.
复溶 (Reconstitution)	

电泳图 (SDS-PAGE image)



产品名称: Recombinant Human CD20 (C-Flag)
产品货号: PHH2421



背景 (Background)

分子别名 (Alternative Names)

B-lymphocyte antigen CD20; B-lymphocyte surface antigen B1; Leukocyte surface antigen Leu-16; Membrane-spanning 4-domains subfamily A member 1; Bp35; CD20; MS4A1

背景介绍 (References)

CD20 is a 33-37 kDa non-glycosylated protein expressed on the surface of normal and malignant B lymphocytes, and belongs to the MS4A (membrane-spanning 4-domain family A) protein family. CD20 protein consists of four hydrophobic transmembrane domains, one intracellular and two extracellular domains (large and small loops) with both N- and C- termini residing within the cytosol. CD20 is also known to be physically coupled to major histocompatibility complex class II (MHCII), CD40 molecule, BCR, and the C-terminal src kinase-binding protein (CBP) that interacts with Src kinases such as LYN, FYN, and LCK. CD20 deficiency resulted in a reduced number of circulating memory B cells, reduced isotype switching of Ig, and decreased IgG antibody levels. In agreement with this observation, challenging the patient' s primary B cells in vitro using T-dependent and T-independent antigens led to the normal proliferation and secretion of IgM but reduced production of IgG.

注意事项 (Note)

For research use only .