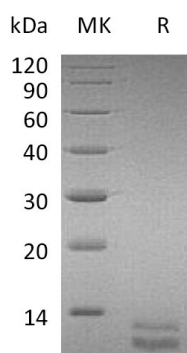


概述 (Summary)

| | |
|-----------------------------|---|
| 英文全称 | CXCL1/C-X-C motif chemokine 1/KC/GRO alpha/CINC1/MGSA-alpha |
| 纯度 (Purity) | Greater than 95% as determined by reducing SDS-PAGE |
| 内毒素 (Endotoxin level) | <1 EU/μg as determined by LAL test. |
| 蛋白构建 (Construction) | Recombinant Mouse C-X-C Motif Chemokine 1 is produced by our Mammalian expression system and the target gene encoding Arg20-Lys96 is expressed with a 6His tag at the C-terminus. |
| Accession # | P12850 |
| 蛋白标签 (Tag) | |
| 表达宿主 (Host) | Human Cells |
| 种属 (Species) | Mouse |
| 预测分子量 (Predicted MW) | 9.4 KDa |
| 蛋白形态 (Form) | Lyophilized from a 0.2 μm filtered solution of PBS, pH 7.4. |
| 储存缓冲液 (Buffer) | |
| 运输方式 (Shipping) | The product is shipped at ambient temperature. Upon receipt, store it immediately at the temperature listed below. |
| 稳定性&储存 (Stability &Storage) | Lyophilized protein should be stored at ≤ -20°C, stable for one year after receipt. Reconstituted protein solution can be stored at 2-8°C for 2-7 days. Aliquots of reconstituted samples are stable at ≤ -20°C for 3 months. |
| 复溶 (Reconstitution) | Always centrifuge tubes before opening. Do not mix by vortex or pipetting. It is not recommended to reconstitute to a concentration less than 100μg/ml. Dissolve the lyophilized protein in distilled water. Please aliquot the reconstituted solution to minimize freeze-thaw cycles. Always centrifuge tubes before opening. Do not mix by vortex or pipetting. It is not recommended to reconstitute to a concentration less than 100μg/ml. Dissolve the lyophilized protein in distilled water. Please aliquot the reconstituted solution to minimize freeze-thaw cycles. |

电泳图 (SDS-PAGE image)

Product Name: Recombinant Mouse CXCL1 (C-6His)
Catalog #: PHM0463



背景 (Background)

分子别名 (Alternative Names)

Growth-regulated alpha protein;C-X-C motif chemokine 1;Platelet-derived growth factor-inducible protein KC;Secretory protein N51;Cxcl1;Gro; Gro1; Mgsa; Scyb1

背景介绍 (References)

Growth-regulated alpha protein (CXCL1,KC), is a member of the alpha chemokine subfamily, was initially identified as an immediate early gene induced in mouse fibroblasts by platelet-derived growth factor. The N-terminal processed form KC(5-72) of the protein is produced by proteolytic cleavage after secretion from bone marrow stromal cells, and shows a highly enhanced hematopoietic activity. Mouse KC shows approximately 63% identity to that of mouse MIP-2. KC is also approximately 60% identical to the human GROs. It has been suggested that mouse KC and MIP-2 are the orthologs of the human GROs and rat CINCs. Cxcl1 has chemotactic activity for neutrophils, and contributes to neutrophil activation during inflammation. Hematopoietic chemokine, in vitro, suppresses hematopoietic progenitor cell proliferation.

注意事项 (Note)

For Research Use Only , Not for Diagnostic Use.