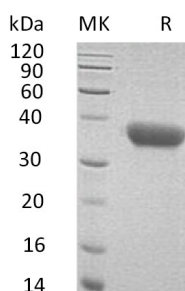


## 概述 (Summary)

英文全称	CXCL16/SR-PSOX
纯度 (Purity)	Greater than 95% as determined by reducing SDS-PAGE
内毒素 (Endotoxin level)	<1 EU/μg as determined by LAL test.
蛋白构建 (Construction)	Recombinant Mouse C-X-C Motif Chemokine 16 is produced by our Mammalian expression system and the target gene encoding Asn27-Trp201 is expressed with a 6His tag at the C-terminus.
Accession #	Q8BSU2
蛋白标签 (Tag)	
表达宿主 (Host)	Human Cells
种属 (Species)	Mouse
预测分子量 (Predicted MW)	20.1 KDa
蛋白形态 (Form)	Lyophilized from a 0.2 μm filtered solution of PBS, pH 7.4.
储存缓冲液 (Buffer)	
运输方式 (Shipping)	The product is shipped at ambient temperature. Upon receipt, store it immediately at the temperature listed below.
稳定性&储存 (Stability &Storage)	Lyophilized protein should be stored at ≤ -20°C, stable for one year after receipt. Reconstituted protein solution can be stored at 2-8°C for 2-7 days. Aliquots of reconstituted samples are stable at ≤ -20°C for 3 months.
复溶 (Reconstitution)	Always centrifuge tubes before opening. Do not mix by vortex or pipetting. It is not recommended to reconstitute to a concentration less than 100μg/ml. Dissolve the lyophilized protein in distilled water. Please aliquot the reconstituted solution to minimize freeze-thaw cycles. Always centrifuge tubes before opening. Do not mix by vortex or pipetting. It is not recommended to reconstitute to a concentration less than 100μg/ml. Dissolve the lyophilized protein in distilled water. Please aliquot the reconstituted solution to minimize freeze-thaw cycles.

## 电泳图 (SDS-PAGE image)

**Product Name: Recombinant Mouse CXCL16 (C-6His)**  
**Catalog #: PHM0473**



## 背景 (Background)

### 分子别名 (Alternative Names)

C-X-C motif chemokine 16; Scavenger receptor for phosphatidylserine and oxidized low density lipoprotein (SR-PSOX); Small-inducible cytokine B16; Transmembrane chemokine CXCL16; SR-PSOX; Zmynd15

### 背景介绍 (References)

CXCL16 is a single-pass type I membrane protein, which consists of 246 amino acids, CXCL16 induces a strong chemotactic response and calcium mobilization. CXCL16 acts as a scavenger receptor on macrophages, which specially binds to oxidized low density lipoprotein. CXCL16 may involves in pathophysiology such as atherogenesis. Soluble CXCL16 may play an important role in liver metastases through the induction of epithelial-mesenchymal transition.

## 注意事项 (Note)

For Research Use Only , Not for Diagnostic Use.