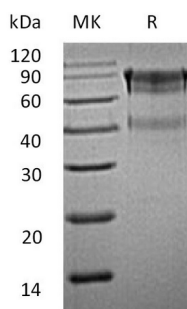


## 概述 (Summary)

英文全称	IL-15 R alpha/IL-15R $\alpha$ /IL-15RA/Interleukin-15 receptor subunit alpha
纯度 (Purity)	Greater than 95% as determined by reducing SDS-PAGE
内毒素 (Endotoxin level)	<1 EU/ $\mu$ g as determined by LAL test.
蛋白构建 (Construction)	Recombinant Mouse Interleukin-15 Receptor Subunit Alpha is produced by our Mammalian expression system and the target gene encoding Gly33-Lys205 is expressed with a human IgG1 Fc tag at the C-terminus.
Accession #	Q60819
蛋白标签 (Tag)	
表达宿主 (Host)	Human Cells
种属 (Species)	Mouse
预测分子量 (Predicted MW)	45.5 KDa
蛋白形态 (Form)	Lyophilized from a 0.2 $\mu$ m filtered solution of 20mM PB, 150mM NaCl, pH 7.4.
储存缓冲液 (Buffer)	
运输方式 (Shipping)	The product is shipped at ambient temperature. Upon receipt, store it immediately at the temperature listed below.
稳定性&储存 (Stability &Storage)	Lyophilized protein should be stored at $\leq -20^{\circ}\text{C}$ , stable for one year after receipt. Reconstituted protein solution can be stored at $2-8^{\circ}\text{C}$ for 2-7 days. Aliquots of reconstituted samples are stable at $\leq -20^{\circ}\text{C}$ for 3 months.
复溶 (Reconstitution)	Always centrifuge tubes before opening. Do not mix by vortex or pipetting. It is not recommended to reconstitute to a concentration less than 100 $\mu$ g/ml. Dissolve the lyophilized protein in distilled water. Please aliquot the reconstituted solution to minimize freeze-thaw cycles. Always centrifuge tubes before opening. Do not mix by vortex or pipetting. It is not recommended to reconstitute to a concentration less than 100 $\mu$ g/ml. Dissolve the lyophilized protein in distilled water. Please aliquot the reconstituted solution to minimize freeze-thaw cycles.

## 电泳图 (SDS-PAGE image)

**Product Name: Recombinant Mouse IL-15RA (C-Fc)**  
**Catalog #: PHM0873**



## 背景 (Background)

### 分子别名 (Alternative Names)

Interleukin-15 receptor subunit alpha; IL15ra; sIL-15 receptor subunit alpha

### 背景介绍 (References)

Mouse interleukin-15 receptor subunit alpha, also known as IL15ra, is a high-affinity receptor for interleukin-15. IL15ra associates as a heterotrimer with the IL-2 receptor beta and gamma subunits (Common gamma chain, or gamma c) to initiate signal transduction. It can signal both in cis and trans where IL15R from one subset of cells presents IL15 to neighboring IL2RG-expressing cells. IL15ra is expressed in special cells including a wide variety of T and B cells and non-lymphoid cells. Human IL15ra shares 45% amino acid sequence homology with the mouse form of the receptor. Eight isoforms of IL-15 R alpha mRNA have been identified, resulting from alternative splicing events involving different exons.

## 注意事项 (Note)

For Research Use Only , Not for Diagnostic Use.