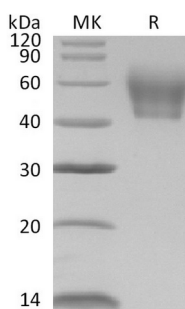


## 概述 (Summary)

英文全称	IL-1RII/Interleukin-1 Receptor Type 2
纯度 (Purity)	Greater than 95% as determined by reducing SDS-PAGE
内毒素 (Endotoxin level)	<1 EU/μg as determined by LAL test.
蛋白构建 (Construction)	Recombinant Mouse Il1r2 Protein/IL-1 RII is produced by our Mammalian expression system and the target gene encoding Phe14-Glu355 is expressed with a 6His tag at the C-terminus.
Accession #	P27931
蛋白标签 (Tag)	
表达宿主 (Host)	Human Cells
种属 (Species)	Mouse
预测分子量 (Predicted MW)	39 KDa
蛋白形态 (Form)	Lyophilized from a 0.2 μm filtered solution of 20mM Tris-HCl, 12% Trehalose, 80mM Arginine, 0.05% Tween80, pH 8.0.
储存缓冲液 (Buffer)	
运输方式 (Shipping)	The product is shipped at ambient temperature. Upon receipt, store it immediately at the temperature listed below.
稳定性&储存 (Stability &Storage)	Lyophilized protein should be stored at ≤ -20°C, stable for one year after receipt. Reconstituted protein solution can be stored at 2-8°C for 2-7 days. Aliquots of reconstituted samples are stable at ≤ -20°C for 3 months.
复溶 (Reconstitution)	Always centrifuge tubes before opening. Do not mix by vortex or pipetting. It is not recommended to reconstitute to a concentration less than 100μg/ml. Dissolve the lyophilized protein in distilled water. Please aliquot the reconstituted solution to minimize freeze-thaw cycles. Always centrifuge tubes before opening. Do not mix by vortex or pipetting. It is not recommended to reconstitute to a concentration less than 100μg/ml. Dissolve the lyophilized protein in distilled water. Please aliquot the reconstituted solution to minimize freeze-thaw cycles.

## 电泳图 (SDS-PAGE image)

**Product Name: Recombinant Mouse IL-1R2 (C-6His)**  
**Catalog #: PHM0976**



## 背景 (Background)

### 分子别名 (Alternative Names)

Interleukin-1 receptor type 2; IL-1R-2; IL-1RT-2; IL-1RT2; CD121 antigen-like family member B; CD121b; IL-1 type II receptor; Interleukin-1 receptor beta; IL-1R-beta; Interleukin-1 receptor type II; CD121b

### 背景介绍 (References)

Mouse Interleukin 1 receptor, type II (IL1R2) is a cytokine receptor that belongs to the interleukin-1 receptor family. This protein binds interleukin alpha (IL1A), interleukin beta (IL1B), and interleukin 1 receptor, type I (IL1R1/IL1RA), and acts as a decoy receptor that inhibits the activity of its ligands. IL-1R2 structurally consisting of a ligand binding portion comprised of three Ig-like domains, a single transmembrane region, and a short cytoplasmic domain. It is expressed in a variety of cell types including B lymphocytes, neutrophils, monocytes, large granular leukocytes and endothelial cells. Mouse IL1RII shares 59% amino acid sequence homology with human IL1 RII in their extracellular domains. The pleiotropic cytokine IL1 is produced to regulate development and maintenance of the inflammatory responses, and binds to specific plasma membrane receptors on cells. Two distinct types of IL1 receptors which are able to bind IL1 specifically have been identified, designated as IL1RI (IL1RA) and IL1RII (IL1RB). IL1R1 contributes to IL-1 signaling, whereas the IL-1R2 has no signaling property and acts as a decoy for IL-1.

## 注意事项 (Note)

For Research Use Only , Not for Diagnostic Use.