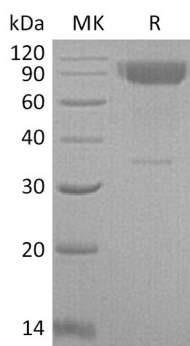


概述 (Summary)

英文全称	IL-2 R gamma/IL-2RG/CD132/Common gamma Chain/Interleukin-2 Receptor Subunit Gamma/IL-2 Ry/CIDX
纯度 (Purity)	Greater than 95% as determined by reducing SDS-PAGE
内毒素 (Endotoxin level)	<1 EU/μg as determined by LAL test.
蛋白构建 (Construction)	Recombinant Mouse Interleukin-2 Receptor Subunit Gamma is produced by our Mammalian expression system and the target gene encoding Ser25-Ala263 is expressed with a human IgG1 Fc tag at the C-terminus.
Accession #	Q3UPA9
蛋白标签 (Tag)	
表达宿主 (Host)	Human Cells
种属 (Species)	Mouse
预测分子量 (Predicted MW)	55.1 KDa
蛋白形态 (Form)	Lyophilized from a 0.2 μm filtered solution of PBS, pH 7.4.
储存缓冲液 (Buffer)	
运输方式 (Shipping)	The product is shipped at ambient temperature. Upon receipt, store it immediately at the temperature listed below.
稳定性&储存 (Stability &Storage)	Lyophilized protein should be stored at ≤ -20°C, stable for one year after receipt. Reconstituted protein solution can be stored at 2-8°C for 2-7 days. Aliquots of reconstituted samples are stable at ≤ -20°C for 3 months.
复溶 (Reconstitution)	Always centrifuge tubes before opening. Do not mix by vortex or pipetting. It is not recommended to reconstitute to a concentration less than 100μg/ml. Dissolve the lyophilized protein in distilled water. Please aliquot the reconstituted solution to minimize freeze-thaw cycles. Always centrifuge tubes before opening. Do not mix by vortex or pipetting. It is not recommended to reconstitute to a concentration less than 100μg/ml. Dissolve the lyophilized protein in distilled water. Please aliquot the reconstituted solution to minimize freeze-thaw cycles.

电泳图 (SDS-PAGE image)

Product Name: Recombinant Mouse IL-2RG (C-Fc)
Catalog #: PHM0993



背景 (Background)

分子别名 (Alternative Names)

Interleukin 2 receptor, gamma chain, isoform CRA_b; IL2rg

背景介绍 (References)

The Interleukin-2 receptor gamma chain (IL-2 R γ , CD132) of the high affinity functional mouse IL-2 receptor complex is a member the hematopoietin receptor family. It is expressed on most lymphocyte (white blood cell) populations, and its gene is found on the X-chromosome of mammals. Common IL2 receptor- γ Chain is required for IL-2 receptor signaling. Besides IL-2, the Common IL2 receptor- γ chain has been shown to be a component of the functional receptor complexes for IL-4, IL-7, IL-9 and IL-15. It is a component of multiple cytokine receptors that are essential for lymphocyte development and function. Common IL2 receptor- γ Chain is also designated the common gamma chain.

注意事项 (Note)

For Research Use Only , Not for Diagnostic Use.