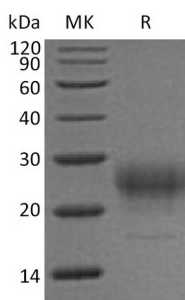


## 概述 (Summary)

英文全称	IL-7/Interleukin-7
纯度 (Purity)	Greater than 95% as determined by reducing SDS-PAGE
内毒素 (Endotoxin level)	<1 EU/μg as determined by LAL test.
蛋白构建 (Construction)	Recombinant Mouse Interleukin-7 is produced by our Mammalian expression system and the target gene encoding Glu26-Ile154 is expressed with a 6His tag at the C-terminus.
Accession #	P10168
蛋白标签 (Tag)	
表达宿主 (Host)	Human Cells
种属 (Species)	Mouse
预测分子量 (Predicted MW)	15.9 KDa
蛋白形态 (Form)	Lyophilized from a 0.2 μm filtered solution of PBS, pH 7.4.
储存缓冲液 (Buffer)	
运输方式 (Shipping)	The product is shipped at ambient temperature. Upon receipt, store it immediately at the temperature listed below.
稳定性&储存 (Stability &Storage)	Lyophilized protein should be stored at ≤ -20°C, stable for one year after receipt. Reconstituted protein solution can be stored at 2-8°C for 2-7 days. Aliquots of reconstituted samples are stable at ≤ -20°C for 3 months.
复溶 (Reconstitution)	Always centrifuge tubes before opening. Do not mix by vortex or pipetting. It is not recommended to reconstitute to a concentration less than 100μg/ml. Dissolve the lyophilized protein in distilled water. Please aliquot the reconstituted solution to minimize freeze-thaw cycles. Always centrifuge tubes before opening. Do not mix by vortex or pipetting. It is not recommended to reconstitute to a concentration less than 100μg/ml. Dissolve the lyophilized protein in distilled water. Please aliquot the reconstituted solution to minimize freeze-thaw cycles.

## 电泳图 (SDS-PAGE image)

**Product Name: Recombinant Mouse IL-7 (C-6His)**  
**Catalog #: PHM1013**



## 背景 (Background)

### 分子别名 (Alternative Names)

IL-7; IL-7 interleukin-7; interleukin-7; Lymphopoietin -1; PBGF

### 背景介绍 (References)

Mouse interleukin-7(IL-7) is the member of hemopoietin family which is important to the differentiation, proliferation, and survival of lymphocyte. Mouse IL-7 shares approximately 88% aa sequence identity with rat IL-7 and 58-60% with human, equine, bovine, ovine, porcine, feline and canine IL-7. It is widely expressed in primary and secondary lymphoid tissues cell and stromal epithelial cells of the thymus, bone marrow, and intestines. IL-7 activation of IL-7 R alpha is critical for both T cell and B cell lineage development. It is important for proliferation during certain stages of B-cell maturation. IL-7 contributes to the maintenance of all naïve and memory T cells, mainly by promoting expression of the anti-apoptotic protein Bcl-2. It is required for optimal T cell-dendritic cell interaction.

## 注意事项 (Note)

For Research Use Only , Not for Diagnostic Use.