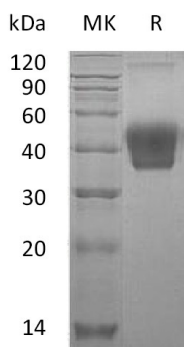


概述 (Summary)

英文全称	M-CSF/CSF1/Macrophage colony-stimulating factor 1
纯度 (Purity)	Greater than 95% as determined by reducing SDS-PAGE
内毒素 (Endotoxin level)	<1 EU/μg as determined by LAL test.
蛋白构建 (Construction)	Recombinant Mouse Macrophage Colony-stimulating Factor 1 is produced by our Mammalian expression system and the target gene encoding Lys33-Glu262 is expressed with a 6His tag at the C-terminus.
Accession #	P07141
蛋白标签 (Tag)	
表达宿主 (Host)	Human Cells
种属 (Species)	Mouse
预测分子量 (Predicted MW)	27 KDa
蛋白形态 (Form)	Lyophilized from a 0.2 μm filtered solution of PBS, pH 7.4.
储存缓冲液 (Buffer)	
运输方式 (Shipping)	The product is shipped at ambient temperature. Upon receipt, store it immediately at the temperature listed below.
稳定性&储存 (Stability &Storage)	Lyophilized protein should be stored at ≤ -20°C, stable for one year after receipt. Reconstituted protein solution can be stored at 2-8°C for 2-7 days. Aliquots of reconstituted samples are stable at ≤ -20°C for 3 months.
复溶 (Reconstitution)	Always centrifuge tubes before opening. Do not mix by vortex or pipetting. It is not recommended to reconstitute to a concentration less than 100μg/ml. Dissolve the lyophilized protein in distilled water. Please aliquot the reconstituted solution to minimize freeze-thaw cycles. Always centrifuge tubes before opening. Do not mix by vortex or pipetting. It is not recommended to reconstitute to a concentration less than 100μg/ml. Dissolve the lyophilized protein in distilled water. Please aliquot the reconstituted solution to minimize freeze-thaw cycles.

电泳图 (SDS-PAGE image)

Product Name: Recombinant Mouse M-CSF (C-6His)
Catalog #: PHM1125



背景 (Background)

分子别名 (Alternative Names)

Macrophage colony-stimulating factor 1; CSF-1; MCSF; Csf1; Csfm

背景介绍 (References)

Macrophage colony-stimulating factor 1 (M-CSF) is a single-pass type I membrane protein. It is a hematopoietic growth factor that is involved in the proliferation, differentiation, and survival of monocytes, macrophages, and bone marrow progenitor cells. M-CSF affects macrophages and monocytes in several ways, including stimulating increased phagocytic and chemotactic activity, and increased tumour cell cytotoxicity. The role of M-CSF is not only restricted to the monocyte/macrophage cell lineage. By interacting with its membrane receptor, M-CSF also modulates the proliferation of earlier hematopoietic progenitors and influence numerous physiological processes involved in immunology, metabolism, fertility and pregnancy.

注意事项 (Note)

For Research Use Only , Not for Diagnostic Use.