

产品名称: Recombinant Cynomolgus CD38 (C-6His)
产品货号: PHV1882

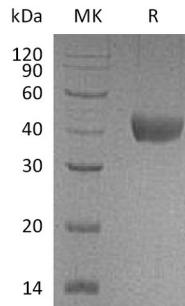


概述 (Summary)

英文全称	CD38/ADP-ribosyl Cyclase 1/cyclic ADP-ribose Hydrolase 1
纯度 (Purity)	Greater than 95% as determined by reducing SDS-PAGE
内毒素 (Endotoxin level)	<1 EU/ μ g as determined by LAL test.
蛋白构建 (Construction)	Recombinant Cynomolgus ADP-ribosyl Cyclase/cyclic ADP-ribose Hydrolase 1 is produced by our Mammalian expression system and the target gene encoding Leu44-Ile301 is expressed with a 6His tag at the C-terminus.
Accession #	Q5VAN0
表达宿主 (Host)	Human Cells
种属 (Species)	Cynomolgus
预测分子量 (Predicted MW)	30.9 KDa
制剂 (Form)	Lyophilized from a 0.2 μ m filtered solution of 20mM Tris-HCl, 150mM NaCl, pH 8.0.
运输方式 (Shipping)	The product is shipped at ambient temperature. Upon receipt, store it immediately at the temperature listed below.
稳定性&储存 (Stability &Storage)	Lyophilized protein should be stored at $\leq -20^{\circ}\text{C}$, stable for one year after receipt. Reconstituted protein solution can be stored at $2-8^{\circ}\text{C}$ for 2-7 days. Aliquots of reconstituted samples are stable at $\leq -20^{\circ}\text{C}$ for 3 months.
复溶 (Reconstitution)	Always centrifuge tubes before opening. Do not mix by vortex or pipetting. It is not recommended to reconstitute to a concentration less than $100\mu\text{g/ml}$. Dissolve the lyophilized protein in distilled water. Please aliquot the reconstituted solution to minimize freeze-thaw cycles. Always centrifuge tubes before opening. Do not mix by vortex or pipetting. It is not recommended to reconstitute to a concentration less than $100\mu\text{g/ml}$. Dissolve the lyophilized protein in distilled water. Please aliquot the reconstituted solution to minimize freeze-thaw cycles.

电泳图 (SDS-PAGE image)

产品名称: Recombinant Cynomolgus CD38 (C-6His)
产品货号: PHV1882



背景 (Background)

分子别名 (Alternative Names)

ADP-ribosyl cyclase 1; cyclic ADP-ribose hydrolase; CD38; T10

背景介绍 (References)

CD38, also called ADP-ribosyl cyclase, is a Type II integral membrane protein with 301 amino acids in length that belongs to the ADP-ribosyl cyclase family. It synthesizes the second messengers cyclic ADP-ribose and nicotinate-adenine dinucleotide phosphate, the former a second messenger for glucose-induced insulin secretion. And also moonlights as a receptor in cells of the immune system. CD38 is expressed in B and T lymphocytes, osteoclasts, and in cardiac, pancreatic, liver and kidney cells. Through its production of cyclic ADP-ribose, CD38 modulates calcium-mediated signal transduction in many types of cells, including neutrophils and pancreatic beta cells.

注意事项 (Note)

For research use only .