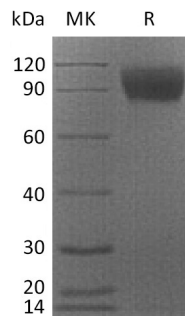


## 概述 (Summary)

|                             |   |
|-----------------------------|---|
| 英文全称                        | M-CSF R/CSF1R/CD115/Macrophage Colony-stimulating Factor 1 Receptor   |
| 纯度 (Purity)                 | Greater than 95% as determined by reducing SDS-PAGE   |
| 内毒素 (Endotoxin level)       | <1 EU/μg as determined by LAL test.   |
| 蛋白构建 (Construction)         | Recombinant Cynomolgus Monkey Colony Stimulating Factor 1 Receptor is produced by our Mammalian expression system and the target gene encoding Ile20-Pro517 is expressed with a 6His tag at the C-terminus.   |
| Accession #                 | XP_005558297.1  |
| 蛋白标签 (Tag)                  |   |
| 表达宿主 (Host)                 | Human Cells   |
| 种属 (Species)                | Cynomolgus  |
| 预测分子量 (Predicted MW)        | 56.1 KDa  |
| 蛋白形态 (Form)                 | Lyophilized from a 0.2 μm filtered solution of PBS, pH 7.4.   |
| 储存缓冲液 (Buffer)              |   |
| 运输方式 (Shipping)             | The product is shipped at ambient temperature. Upon receipt, store it immediately at the temperature listed below.  |
| 稳定性&储存 (Stability &Storage) | Store at ≤-70°C, stable for 6 months after receipt. Store at ≤-70°C, stable for 3 months under sterile conditions after opening. Please minimize freeze-thaw cycles.  |
| 复溶 (Reconstitution)         | Always centrifuge tubes before opening. Do not mix by vortex or pipetting. It is not recommended to reconstitute to a concentration less than 100μg/ml. Dissolve the lyophilized protein in distilled water. Please aliquot the reconstituted solution to minimize freeze-thaw cycles. Always centrifuge tubes before opening. Do not mix by vortex or pipetting. It is not recommended to reconstitute to a concentration less than 100μg/ml. Dissolve the lyophilized protein in distilled water. Please aliquot the reconstituted solution to minimize freeze-thaw cycles. |

## 电泳图 (SDS-PAGE image)

**Product Name: Recombinant Cynomolgus CSF1R (C-6His)**  
**Catalog #: PHV2002**



## 背景 (Background)

### 分子别名 (Alternative Names)

Macrophage colony-stimulating factor 1 receptor; CSF-1 receptor; CSF-1-R; CSF-1R; M-CSF-R; Proto-oncogene c-Fms; CD115; CSF1R; FMS

### 背景介绍 (References)

Macrophage colony-stimulating factor 1 receptor (CSF1R) is a member of the type III subfamily of receptor tyrosine kinases that also includes receptors for SCF and PDGF. These receptors each contain five immunoglobulin-like domains in their extracellular domain (ECD) and a split kinase domain in their intracellular region. CSF1R is expressed primarily on cells of the monocyte/macrophage lineage, dendritic cells, stem cells and in the developing placenta. CSF1 and its receptor (CSF1R, product of c-fms proto-oncogene) were initially implicated as essential for normal monocyte development as well as for trophoblastic implantation. It plays an important role in the regulation of osteoclast proliferation and differentiation, the regulation of bone resorption, and is required for normal bone and tooth development. It is required for normal male and female fertility, and for normal development of milk ducts and acinar structures in the mammary gland during pregnancy. Aberrant expression of CSF1 or CSF1R may play a role in inflammatory diseases, such as rheumatoid arthritis, glomerulonephritis, atherosclerosis, and allograft rejection.

## 注意事项 (Note)

For Research Use Only , Not for Diagnostic Use.